

PART OF N.W. 1/4 OF
SECTION 29, T. 7 N., R. 1 W., S. L. B. & M.

51-1

IN NORTH OGDEN CITY & NORTH OGDEN DISTRICT

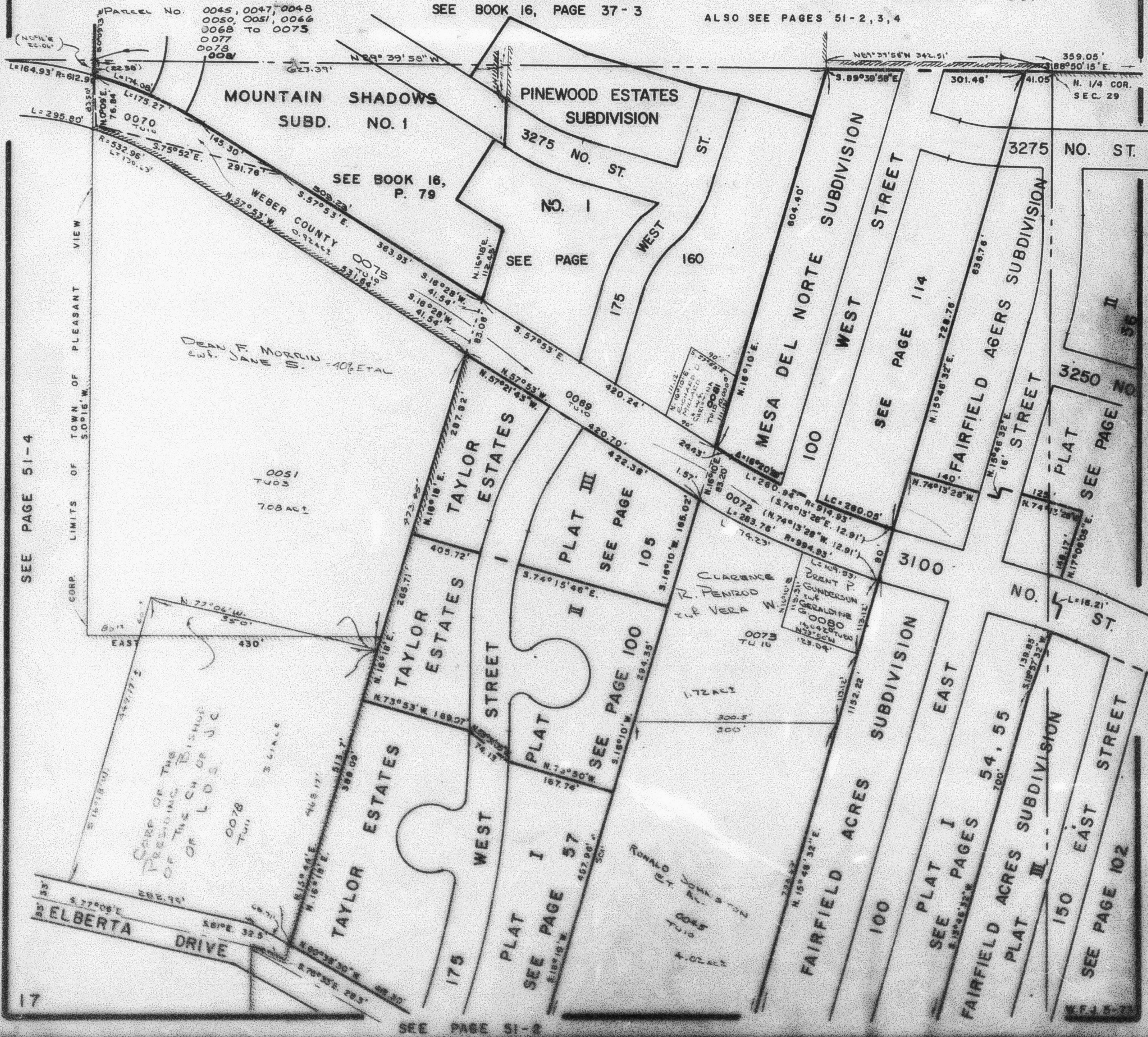
TAXING UNIT 03, 10, 11

SCALE 1"=100'

PREFIX: 17-051

SEE BOOK 16, PAGE 37-3

ALSO SEE PAGES 51-2, 3, 4



SEE PAGE 51-4

17

SEE PAGE 51-2